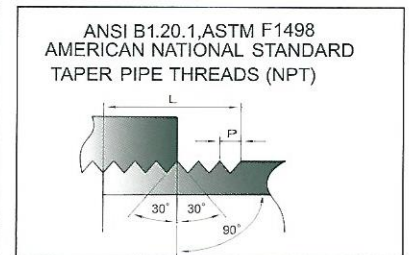
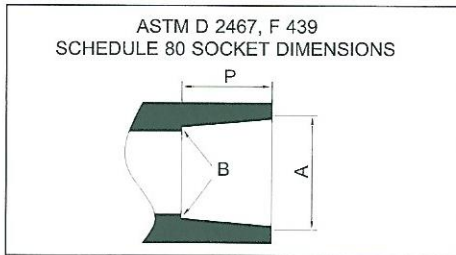
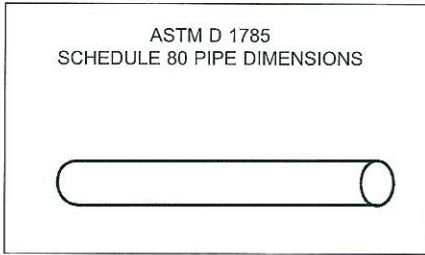


ASTM STANDARDS



單位 (unit) : inch

Nominal Pipe Size in.	Mean Outside Diameter in.	O.D. Tolerance in.	Minimum Wall Thickness in.
1/8	0.405	±0.004	0.095
1/4	0.540	±0.004	0.119
3/8	0.675	±0.004	0.126
1/2	0.840	±0.004	0.147
3/4	1.050	±0.004	0.154
1	1.315	±0.005	0.179
1-1/4	1.660	±0.005	0.191
1-1/2	1.900	±0.006	0.200
2	2.375	±0.006	0.218
2-1/2	2.875	±0.007	0.276
3	3.500	±0.008	0.300
4	4.500	±0.009	0.337
5	5.563	±0.010	0.375
6	6.625	±0.011	0.432
8	8.625	±0.015	0.500
10	10.750	±0.015	0.593
12	12.750	±0.015	0.687
14	14.000	±0.015	0.750
16	16.000	±0.019	0.843
18	18.000	±0.019	0.937
20	20.000	±0.023	1.031
24	24.000	±0.031	1.218

Nominal Size in.	Diameter			Socket Length minimum P
	Entrance A	Bottom B	Tolerance in.	
1/8	0.417	0.401	±0.004	0.500
1/4	0.552	0.536	±0.004	0.625
3/8	0.687	0.671	±0.004	0.750
1/2	0.848	0.836	±0.004	0.875
3/4	1.058	1.045	±0.004	1.000
1	1.325	1.310	±0.005	1.125
1-1/4	1.670	1.655	±0.005	1.250
1-1/2	1.912	1.894	±0.006	1.375
2	2.387	2.369	±0.006	1.500
2-1/2	2.889	2.868	±0.007	1.750
3	3.516	3.492	±0.008	1.875
4	4.518	4.491	±0.009	2.250
5	5.583	5.553	±0.010	2.625
6	6.647	6.614	±0.011	3.000
8	8.665	8.655	±0.015	4.000
10	10.780	10.735	±0.015	5.000
12	12.780	12.735	±0.015	6.000
14	14.039	13.984	±0.015	7.000
16	16.039	15.982	±0.019	8.000
18	18.038	17.980	±0.019	9.000
20	20.038	19.980	±0.023	10.042
24	24.077	23.973	±0.031	12.2

Nominal Pipe Size in.	Threads Per in.	Effective Thread Length L	Pitch of Thread P
1/8	27.0	0.2639	0.03704
1/4	18.0	0.4018	0.05556
3/8	18.0	0.4075	0.05556
1/2	14.0	0.5337	0.07143
3/4	14.0	0.5457	0.07143
1	11.5	0.6828	0.08696
1-1/4	11.5	0.7068	0.08696
1-1/2	11.5	0.7235	0.08696
2	11.5	0.7565	0.08696
2-1/2	8.0	1.1375	0.12500
3	8.0	1.2000	0.12500
4	8.0	1.3000	0.12500
5	8.0	1.4063	0.12500
6	8.0	1.5125	0.12500
8	8.0	1.7125	0.12500

STANDARDS COMPARISONS

IPS-to-Metric transition chart are listed by nominal size. The chart below compares nominal and actual pipe O.D. for each size according to the designated standard.

單位 (unit) : inch

JIS K6741 (mm)		DIN 8062 (mm)		ASTMD1785 (in)		NPT-ANSIB 1.2 0.1** Tapered Thread		BSP ISO 7/1 ** Parallel Thread	
Nominal	Actual *	O.D.	Actual *	Nominal	Actual *	Designation	Threads in	Designation	Threads 25.4mm
16	22	20	20	1/2	0.840	1/2	14.0	1/2	14
20	26	25	25	3/4	1.050	3/4	14.0	3/4	14
25	32	32	32	1	1.315	1	11.5	1	11
30	38	40	40	1-1/4	1.660	1-1/4	11.5	1-1/4	11
40	48	50	50	1-1/2	1.900	1-1/2	11.5	1-1/2	11
50	60	63	63	2	2.375	2	11.5	2	11
75	89	90	90	3	3.500	3	8.00	3	11
100	114	110	110	4	4.500	4	8.00	4	11

Specified dimension, certain tolerances apply

** NPT and BSP have different thread angles and are not compatible